


Miniature Ribbon Bells

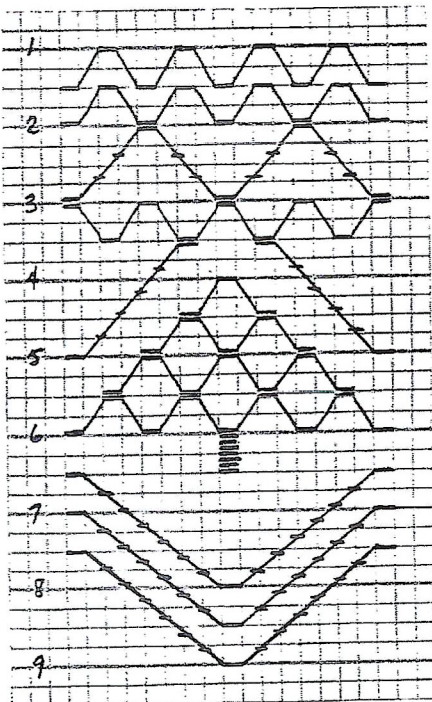
MATERIALS NEEDED:

- 15" (38 cm.) of 2" (5 cm.) wide white satin ribbon
- empty plastic coffee creamer container
- 20" (45 cm.) of 3/8" (1 cm.) red satin ribbon
- red and green floss
- 1 jingle bell (optional)

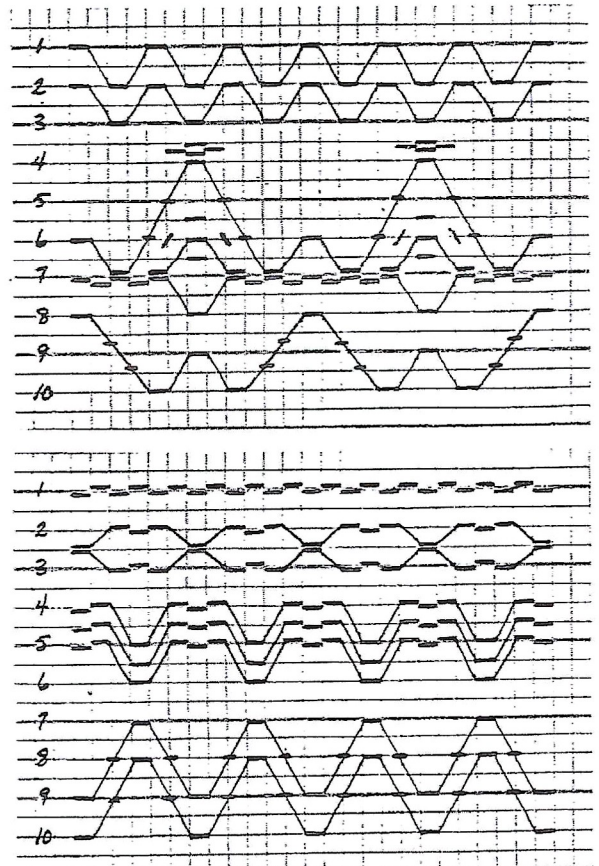
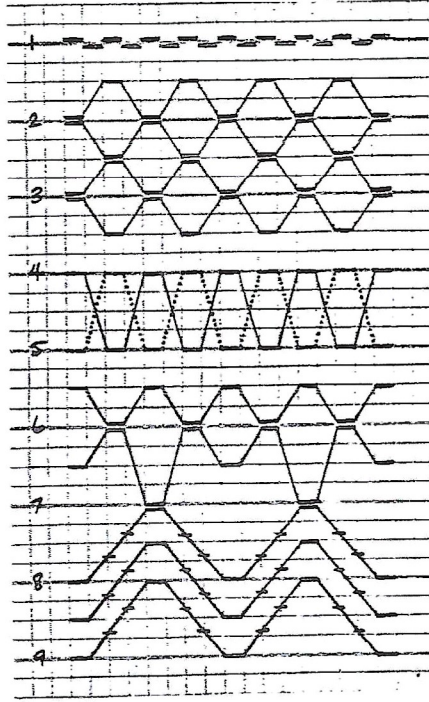
ASSEMBLY INSTRUCTIONS:

1. Pleat wide satin ribbon as follows:
 - (a) by machine, using 10 rows of closely spaced pleating
 - (b) by dots, spaced 3/16" (.5cm.) apart.
2. Pull up pleating threads tighter at top edge than at lower edge. Tie threads. 
3. Smock using design shown in diagrams below.
4. Remove pleating threads and with right sides together, sew raw edges of ribbon together matching smocking rows.
5. Turn right side out, and with needle and long doubled thread, gather top edge in as tightly as possible. Do not break thread.
6. Cut 3 pieces of red ribbon 3" (7.5 cm.) long. Form each into a loop and using thread still attached to ribbon, sew needle through the foldover and the middle section, flattening all 3 into a rosette. Attach remaining ribbon as the hanging loop and fasten all 4 pieces of ribbon securely to the top of the bell. Fasten through the creamer and attach jingle bell to the inside. The needle will penetrate the plastic quite easily, but don't use too many stitches as each leaves a hole.

Try several bells clustered together hanging from a large bow. Each bell only takes 1 to 2 hours to complete.



SMOCKING DESIGNS
for
CHRISTMAS BELLS



SMOCKING DESIGNS
for
MINIATURE RIBBON
BELLS